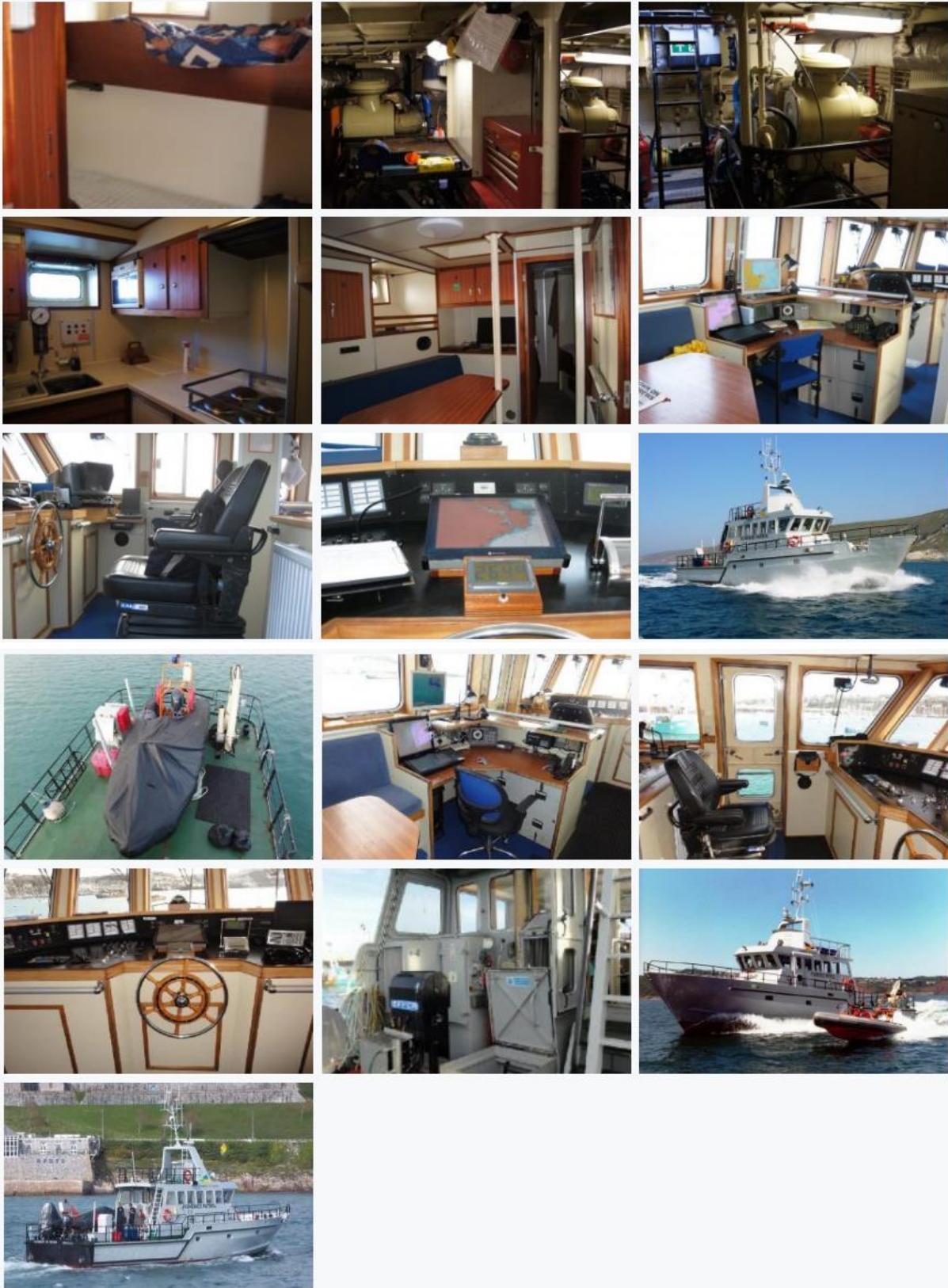


# DRUMBEAT OF DEVON



## VESSEL SPECIFICATION

Cameroonian/British flag – Registered Tonnage: 41.83t and G.R.T: 83.83t

<b>Make:---</b>	DAMEN	<b>Vessel Reference:---</b>	LOCH 1205
<b>Model:---</b>	21m STAN PATROL 2200 Mk 2	<b>Number of Engines:---</b>	2 and 2 generators.
<b>LOA:---</b>	21.04 Metres (69' 0")	<b>HP (each):---</b>	630
<b>LWL:---</b>	19.10 Metres (62' 8")	<b>Fuel Type</b>	Diesel
		<b>/Capacity;-</b>	5600+600+2000=8200 litres
		<b>Fresh Water Cap-</b>	2 tons
<b>Beam:---</b>	5.45 Metres (17' 11")	<b>Hull Material---</b>	Steel hull and Aluminium superstructure
<b>Draft:---</b>	1.98 Metres (6' 6")	<b>Speed:---</b>	18knots
<b>Build Year:---</b>	1991	<b>Hull Type:</b>	Displacement

### 1.4 Accommodation Overview:

Berths:	8	Galley Includes:	
Cabin(s):	4	Cooker	Yes
Heads:	Yes	Microwave:	Yes
Shower:	Yes	Refrigerator:	Yes
Pressurized Hot/Cold Water:	Yes		
		AirConditioning:	Yes/Newly installed

### Accommodation Description:

From forward “ A chain locker extends forward of the accommodation bulkhead with hatch access at deck level. There are in all 4 No. CREW CABINS; 2 No. to starboard occupying the forward section of the lower deck area and 2 No. to port including the skippers’ cabin aft to port each having two single ‘tiered’ bunks. A CREW MESS is situated to the port side with a dining table, TV, etc. To starboard aft is the HEADS compartment equipped with a flushing toilet and a wash/hand basin. A separate, SHOWER compartment is adjacent outboard also with wash/hand basin. The GALLEY area amid-ships starboard side comprises a double sink unit, microwave, cooker hob, and oven arrangement with appropriate storage areas and worktop preparation surfaces. Accommodation areas were initially heated by radiators to each cabin and mess areas but have recently been replaced with strong Air Conditioning units. A

companionway leads to the BRIDGE steering house with central helm con and provision for three seated crew on pedestal KAB type suspension seating. Bridge-controlled engines and navigational instruments are mounted within a console area extending the full width of the forward bridge windows. A Navigation Table is provided behind the con to port and further crew bench seating aft on the port side. An access door adjacent to the helm leads to the port side deck adjacent to the helm and starboard aft is the main exit door/companionway leading to the AFTER DECK. A deck hatch access leads adjacent to the companionway leads to the ENGINE ROOM with a further access point aft above the steering compartment. This after deck area is mainly used for the dry docking of a 5.5m Avon RIB (with fitted Yamaha 60hp four stroke outboard) positioned on a purpose-made cradle support and to port is an Effer hydraulic crane used for deployment of the RIB. This is also operated in association with other equipment launched and retrieved over the stern or along the port quarter. Usual deck fitments are provided commensurate with docking and mooring arrangements. Access to the fly-deck with secondary steering con.

Mechanical			
Engine Make & Model:-----	Cummins KTA19-M2	Battery System:---	24V
Gearbox Make & Model:---	Reduction	Power Generators:	
Drive Configuration:-	Shaft Drive	- Genset (Kva):	28
Engine Year:-----	1991	- Genset Model:	Lister Petter CR(K)
Engine Hours:::---	16,076	Inverter:	No
Last Serviced:	August 2014	Shore Power:	Yes
		Battery Charger:	Yes

Two Cummins KTA19-M2 inline six-cylinder engines rated at 507bkw (630bhp) fitted with ZF reduction gearboxes conventionally driven through shafts and stern gear. Each engine runs alternator charging and hydraulic pumps to ancillary services. Consumption is reportedly 135 litres per hour (main propulsion at 1500rpm and onboard generator(s) operating). Fuel Capacity: Main Tanks – **5600+2000 litres + 600 litres day Tank=8200litres**. Fresh Water Capacity: 2 Tons.

Auxiliary Power: Lister Petter CR(K) driving Stamford MHC144G generator producing 27.5KvA. Generator alone fuel consumption is approx. 12 litres an hour. An additional Fischer Panda 15KvA generator is also installed.

### Engine room

Access to the engine room is by deck hatch situated aft of the wheelhouse overhang, at the lower deck level. A further hatch is situated at after the end of the deck above the steering

compartment. The engine room is laid out in a maintenance-friendly manner and provides easy access to all areas both for mechanical and electrical repairs. Access is provided to the steering compartment internally through the after-bulkhead port side.

Stern gear Conventional 90 mm diameter shaft drive via REINTJES VWS 234 O S 2.542:1 Hydraulic reversing gearboxes.

Working gear EFFER Crane/Hiab, Aft deck winch, Flybridge winch.

The wheelhouse has a central helm con and provision for two seated crew on pedestal KAB type suspension seating. Bridge-controlled engines and navigational instruments are mounted within a console area, extending the full width of the forward bridge windows.

A navigation table is provided behind the con to port, and further crew benches seating aft on the port side. An access door adjacent to the helm leads to the port side deck adjacent to the helm and starboard aft is the main exit door/companionway leading to the after deck.

### **Sea trial data**

Running Trials:

- Date/Time 4th August 2014
- Area Off Brixham Devon
- Number of persons on board 4
- Hull state Clean
- Fuel load 40%
- Water load 0%
- Air temperature 20 C
- Sea temperature 18 C
- Sea state Slight
- Depth of water >12m
- Wind speed SW 15 knts
- Max speed over ground (GPS) 16.8 knts
- Max Speed through water (log) NA

Notes: \*Wheelhouse engine oil pressure gauges Intermittent-rely on-engine gauges.

Full details are available in the survey report.

### **Inventory**

#### **Navigation Equipment**

- AUTOPILOT: Robertson AP9 Mk2
- RADAR: Decca Bridge master

- AIS: Receiver
- PLOTTER: Transas/Navi Sailor ECDIS + Olex version 4.1
- GPS: Furuno GPS x 2
- VHF: Sailor RT2048 VHF + Skanti 1000 DSC + 2 x Icom H/held
- TELEPHONE: Sailor 150 Fleet Broadband Sat-phone + Nokia cell phone
- NAVTEX: GMDSS ICS Nav 5
- DEPTH: JFC Echo Sounder
- COMPASS: Venus magnetic + KVH Azimuth Digital Gyro  
CCTV: 2 x aft-facing cameras

### **Electrical**

- Ships system – 24v and 240v
- Main Generator: Lister Petter CR(K) – 27.5Kva
- Fischer Panda 15 Kva

### **Protection of Personnel**

**Bulwarks / Guard Rails / Handholds**-Adequate

**Sound protection** – Signage and ear defenders at engine room entrance.

**Jackstays/Harness Clip-on points:** as above

### **Non-Slip Decks / Escape Hatches**

Adequate nonslip on deck areas / Chequer plate in the engine room

### **Life-Saving Apparatus**

Below is the list of safety equipment required for MCA Coding for operating range category 2: up to 60 miles from a haven and available onboard ‘Drumbeat’.

- Life raft – DpT SOLAS A (cat.0), B (cat 1,2,3,4) or ISAF or ISO9650 or ORC plus grab bag (cat 2,3,4) (in-date) 200% 2x SOLAS A 6 PERSON/ expires 10-2015
- Hydrostatic release for life rafts Yes
- Lifebuoys (horseshoe or round) – 2 ROUNDS
- Lifebuoy buoyant lines (18M) – fitted to remaining lifebuoy
- Lifejackets (DTP or BSEN399-275N or BSEN396-150N) 2 extra if gas in.6 SOLID +Lights
- Safety harnesses – 2
- Attachment points for harnesses
- Red parachute flares (in-date) 4 expiration 09/2017

- Red hand flares (in-date) 6 expiration 09/2017
- Red smoke- buoyant or hand (cat 2,3,4) (in-date) 2 expires 09/2017
- TPA (thermal protective aids) – 2 required if immersion suits provided for all on board  
-4
- Portable VHF (not Cat.4 if fixed VHF provided) – 2
- SSB radio or INMARSAT ship earth station – Sat phone – n/c 406 EPIRB
- 5 SART (not required if EPIRB has 406/121.5 dual frequency) – –
- SOLAS 1 or 2 SOLAS 2 rescue information charts – displayed – 1
- Training manual – 1
- Instructions for on-board maintenance of life-saving appliances – 1
- Fire extinguishers 1-(13 A 113B), 2 – (5 A 34B), 2- fire buckets, fire blanket
- Fire pump (fixed / portable) –
- Nautical publications (as per MS Rules 1975 SI 1975 700)
- Light and Shapes Signals (as per Collision Regulations)
- DPT approved radar reflector – 1
- Compass deviation correction table
- Hand bearing compass or Pelorus- 1
- Searchlight -1
- Emergency torch – 1
- A sound signal (canister type with spare canister) – 1
- Barometer- 1
- Main & kedge anchors plus chain/warp
- Emergency water supply n x 2 Litres (for >24hrs)
- Tender (marked with no. of person capacity)
- Man overboard recovery device
- kit & First Aid Man. (Merchant Shipping Notice MSN1768 scale A, B, C) or equivalent= C
- 50% portable blanks for portlights below weather deck —= deadlights

### **1.9 Deck & General**

Avon 5.5m RHIB with 60hp Four Stroke Yamaha Outboard (1991)

Effer Sea Crane 6000-2S with remote and manual controls (2011) – (max reach 6.5m with load 850kg – mid-reach 3.7m with 1550kg)

Pullmaster PL5 Free fall winch  
Usual deck and anchoring equipment “ Danforth + Chain

### **Certification**

#### **British certificate.**

- Annual Maintenance certificates since 2003
- Test Certificate 2013
- Workboat certificate (2013) from Maritime Coast Guard Agency Uk(MCA)

#### **Cameroon Registered;**

- Seaworthiness Certificate
- Tonnage Certificate
- Registration Certificate
- Minimum safe manning Certificate
- Certificat De Securite Radiotelphonique
- Act De Camerounisation

## **TECHNICAL PARTNERS**

### **LOGIN MARINE INTERNATIONAL UK**

Lochin Marine International is a British boat building and marine services business spanning more than 40 years in the industry. It is one of the UK’s oldest continuously operating boat building companies. It is known for manufacturing some of the fastest seagoing crafts with capabilities for operating in rough weather conditions.

FRUTABO has already engaged in the process of signing an MOU on technical cooperation.

### **WILLIAM LAWRENCE**

Master FPV “Drumbeat of Devon” Devon County Brixham UK 1999-2014

He was recently in Cameroon on invitation from FRUTABO Maritime Ltd to launch the vessel and to train local crew on the efficient and effective operation of the vessel. He has opted to offer his assistance when needed for a period of 3 years.

He holds the following certificates

- Certificate of Competency as Second Hand (special) no 34329 dated 11 Sept. 1984
- Certificate of Competency as O.O.W. Unlimited no. CoC0028725
- Certificate of Competence G.M.D.S.S. G.O.C. no. GG26501 dated 14 Jan. 2002

- V.Q. Level 3 Merchant Navy Operations no. R 010829 dated August 2002
- Certificate of Proficiency in Survival Craft and Rescue Boats no. PSC 00469 dated 16th March 2002
- Basic Sea Survival Certificate no.1722 WSF dated 24 Sept 1998
- Training in Basic Fire Fighting no. MN 0221 dated 28 April 2002
- Training in Advanced Fire Fighting no.MN 0503 dated 28th Jan. 2003
- Updated Certificate of Proficiency for Persons in medical care on board Ship No. MC5/11001 dated 17/11/2010
- Navigation, Radar, and ARPA simulator training (management level) no. PMTC/DWJ/M22/99 dated 22nd. July 1999
- Efficient Deck Hand Certificate no.PMTC/DWJ/87/2001
- Cummins Engine Company Ltd K/VK – Technician Level 2
- RYA/MCA Powerboat Advanced cert. no 8194 dated 29/04/99 (commercially endorsed)
- Fishing Gear Technology Cert. no. 46
- RN / MMO marine enforcement course Jan 2012 (3 weeks)
- ML 5 medical
- Protecting Information Levels 1 and 2 (National School of Government)
- Ship Mounted Crane (hydraulic) 16/10/12
- C.A. Approved Engineering Course – no. WTA/AEC/10/12-06
- Manual Handling Awareness cert. no. T-124251-127204
- Personal Safety and Social Responsibilities Cert. no. WTA 06/02-05 dated 04/02/2013
- Fire Prevention and Fire Fighting (STCW95) Cert. no. MN 2899 dated 07/02/2013
- Hygiene and Cleaning in the Seafood Industry Seafish (CIEH)
- Human Element Leadership and Management (HELM) 2014



Year of build		1991						
Builder		Damen Shipyards, Gorinchem						
L.O.A.		21.04 meters						
B.O.A.		5.45 meters						
Draft		1.98 meters						
Gross tonnage		83.83 tonnes						
Reg. tonnage		41.83 tonnes						
Propulsion		2 X Cummins KTA19-M2						
Total output		2 X 507 bKW						
Fuel capacity		5600 liters + 600-day tank						
Running hours		47 hours						
Operating limits		Small workboat code cat 2 – 60 miles from haven						
Main generator		Lister Petter CR(K) driving Stamford MHC144G Generator						
Output		27.5 kVA						
Aux. generator		Fischer Panda Genset						
Output		15 kVA						
Stem		raked						
Stern		square						
Construction		round bilge hull						
Material		Steel hull with aluminum superstructure						

<b><u>Deck equipment</u></b>									
Crane			Effer Sea Crane 6000 – 2S with remote and manual controls						
Winch			Pullmaster PL5 Freefall						
RIB			1 X Avon 5.5 with Yamaha 60 HP 4 stroke injection						

<b><u>Bridge electronics</u></b>									
Pilot			Robertson Norway AP9 Mk2						
Radar			Decca Bridgemaster						
			AIS receiver						
Navigational plotters			Transas / Navi Sailor ECDIS						
			Olex version 4.1						
			2 X Furuno GPS						
Communications			Sailor Compact RT2048 VHF						
			Skanti 1000 DSC VHF						
			2 X Icom handheld VHF's						
			Sailor 150 Fleet Broadband Satphone						
			Navtex GMDSS ICS Nav5						
Echo Sounder			JFC color						
Compass			Venus magnetic						
			KVH Azimuth Digital Gyro						
<b><u>Accommodation</u></b>			4 X double cabins, separate heads, and shower						